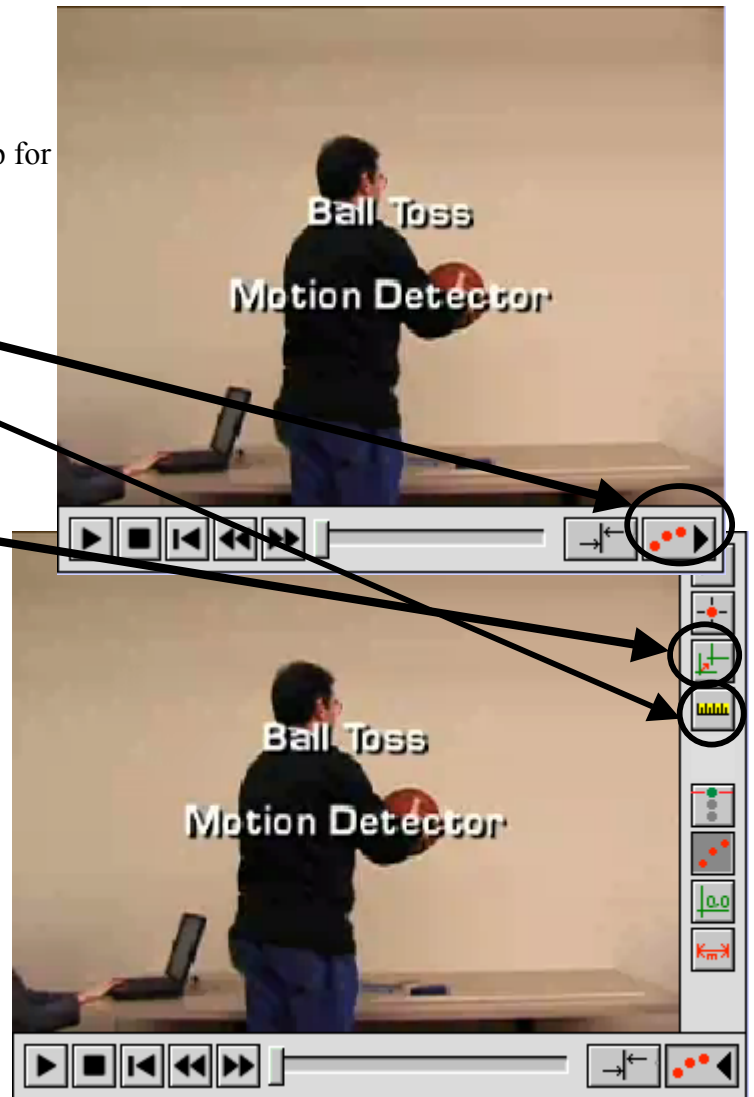


Video Analysis in Logger Pro 3

- Open Logger Pro 3
- Goto “Insert” Menu and select “Movie”
- Select “Gravity Movies” Folder (on the desktop for the Dells)
- Select One of the videos
- Click on “Enable/Disable Video Analysis”
- Click on “Set Scale”
- Notice the Meter stick on the desk. Click and drag the length of the meter stick..
- Click on “Set Origin” and then click somewhere in the picture.
- Now Click on play and try to pause just as he lets go of the ball.
- Click on “Add Point” (just above set origin)
- Click on the top of the ball. Notice the ball moves (the movie has advanced one frame). Continue clicking on the top of the ball until he catches the ball again.
- Once done, click on one of the corners of the video window and make it smaller.
- Double click on the graph select the Axes Options tab.
- Uncheck the X (m) (this is position in the X direction). Leave Y (m) checked, this is position in the Y direction (i.e. up and down). Check Y Velocity (m/s) the click on “Done”
- Sketch the position and velocity graphs in your lab notebook.
- Find Acceleration and compare to the known value for acceleration due to gravity.



Do video analysis as outlined above for the following videos. If you're in a group a different group member should run the computer for each video!!!

- BallDrop
- BallTossUp
- BallTossOut

For the File “How Big’s the Ball” do video analysis and determine the diameter of the ball. For your write up you will report this value and describe your procedure for determining it.